



Contents

Introduction	1
Method	1
Student Perspective	9

Introduction

You can create a separate honesty declaration, where students must check a box to state that they will not cheat/plagiarise, and have completion of this a requirement to achieve access to the quiz itself.

This can be done by adding a Checklist with a release condition (this will require the student to complete the Checklist - honesty declaration - in order to make the quiz available). Both the Checklist and the Quiz are then added to the My Learning section.

Method

- 1)** Within the module on Brightspace, select **Module Tools** from the toolbar and then **Checklist**.
- 2)** This will open a new page; select **New Checklist**.
- 3)** Add a name and a description and click **Save**.



- 4) You will then need to add an item to the Checklist; on the next page, select **New Item**.








Checklist Properties

Name *

Honesty code

Description

Paragraph **B** *I* U ~~A~~  

Open this checklist and select the box to state the w
will be able to access and complete the assessment.

New Window

☐ Open this checklist in a new window when viewed.

Categories and Items

New Category **New Item** Reorder

You haven't created any categories or items. Click New Category

- 5) This will open another new page; for the **Category** dropdown, select **New Category**.

New Item

Category *

-- No categories exist --

[New Category]

Name *

- 6) Add a name for the category (items within a Checklist must be assigned to a Category) and a description if you wish and select **Save**.
- 7) Next, add a name for the Item - this is the declaration itself that students will be agreeing to - and the statement that they will be agreeing to and then select **Save**.

New Item

Category *

Honesty Statement ▾

[New Category]

Name *

Honesty Declaration

Description

Paragraph ▾**B***I*U ▾*A*

≡ ▾≡ ▾▶◀🔗🖼️Σ ▾📊 ▾+ ▾Lato (Recom... ▾19px ... ▾⋮🔍

¶👁️≡🔍↔️🔄

Open this checklist and select the box to state the work for the following assignment is your own work; once you have done this, you will be able to access and complete the assessment.

Due Date

☐

📅20/06/2024

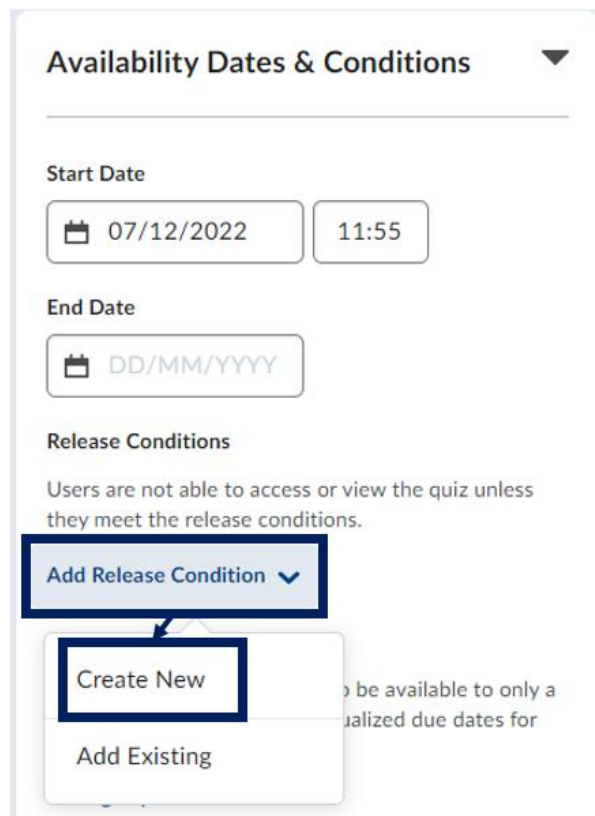
14:18

Save

Save and New

Cancel

- 8) This will return you to the main Checklist page, with the honesty declaration added in the **Categories and Items** section. Select **Save and Close** to finish creating the honesty declaration.
- 9) The next step is to create the release condition linking it to the quiz. Go to **Assessment** in the toolbar and then **Quizzes**, and open the relevant quiz to edit it.
- 10) In the **Availability Dates & Conditions** section, select **Add Release Condition** and then **Create New**.



- 11)** This will open up a new window, displaying two dropdowns. The first is called **Condition Type**; select **Completed Checklist** from it.

Create a Release Condition

Release this item when the following condition is met

Condition Type

-- Select Condition Type --

- Select Condition Type --
- Assignments
 - Submission to folder
 - Receive feedback on submission
 - Score on associated rubric
 - No submission to folder
- Awards
 - Award Earned
- Checklist
 - Completed checklist**
 - Completed checklist item
 - Incomplete checklist
 - Incomplete checklist item
- Classlist
 - Group enrolment
 - Org unit enrolment
 - Section enrolment
 - Role in current org unit
 - Date of enrolment in current org unit
- Competencies

Create Cancel

- 12)** This selection will then update the second dropdown to display all the Checklists within the module. Select the

relevant one and then the **Create** button to attach this new release condition to the quiz.

Create a Release Condition

Release this item when the following condition is met:

Condition Type

Completed checklist

Condition Details


Checklist

-- Select Checklist --

- 13)** This will then display under the **Release Conditions** heading within the **Availability Dates & Conditions** section.

Release Conditions

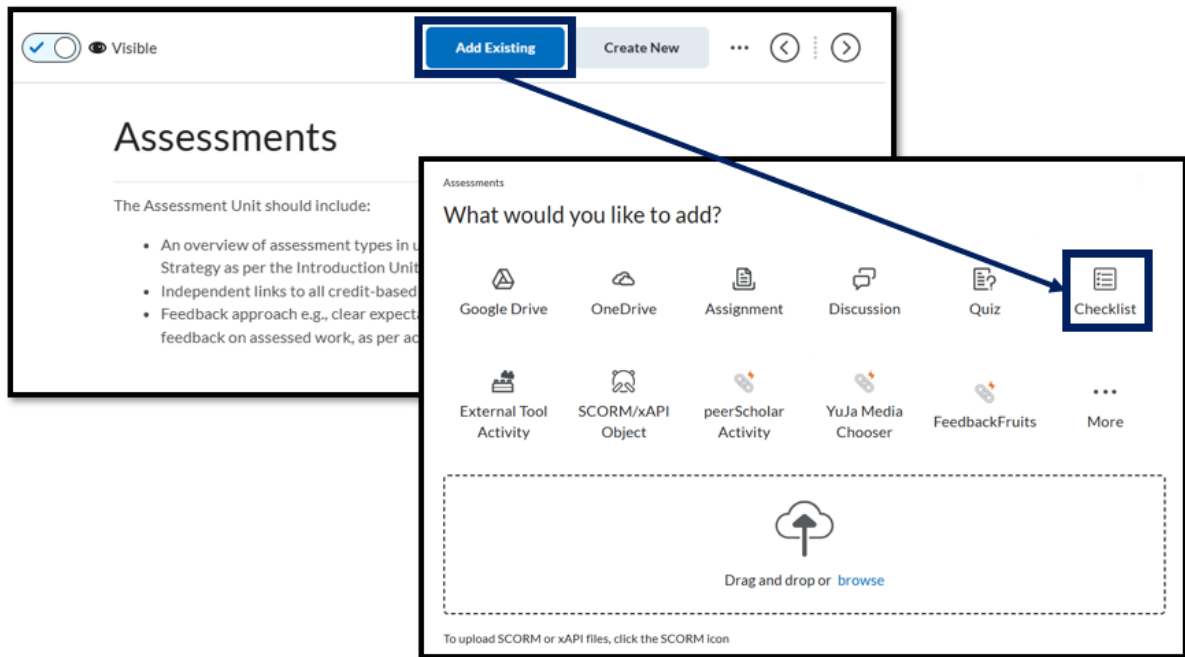
To view this item, users must satisfy

 Completes checklist: Student Declaration

Add Release Condition

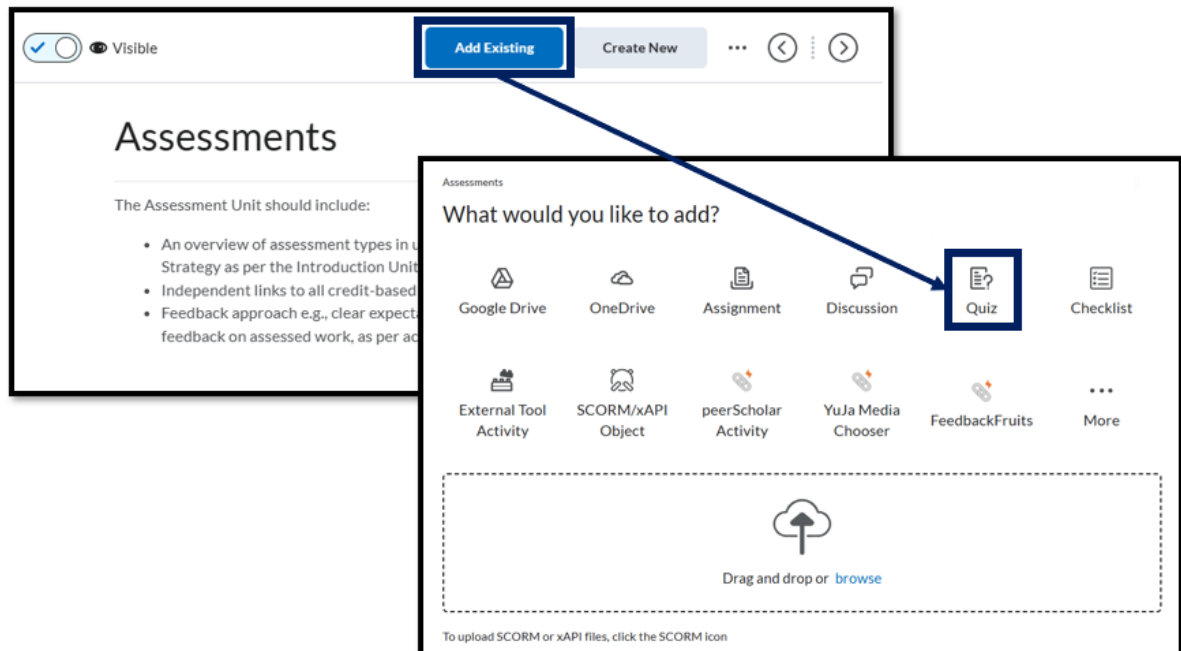
- 14)** Select **Save and Close** on the quiz to make this update, and you will then need to add both the quiz and the checklist to **My Learning** - navigate there via the module tool bar.

- 15)** Within the relevant unit in **My Learning**, select the dropdown for **Add Existing** button.

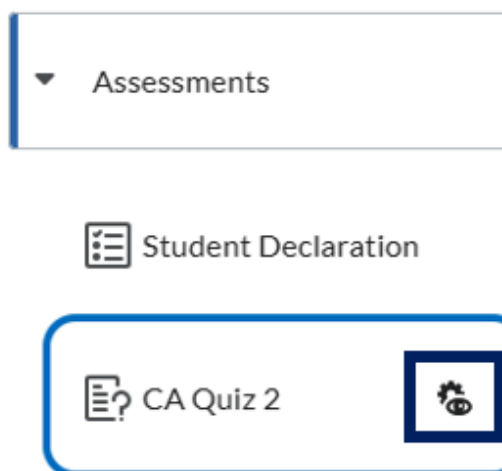


- 16)** This will open a new page; select the **Checklist** option from the list, and then the relevant checklist from the window that opens to add it to the navigation in **My Learning**.

- 17)** To add the Quiz, again select **Add Existing**, and then the **Quizzes** option.

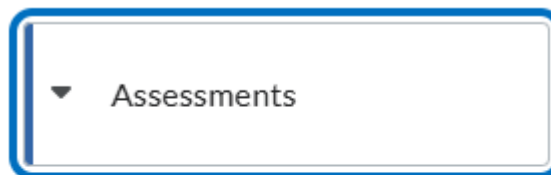


18) Select the relevant quiz to add it to the navigation in **My Learning**. A small icon – an eye in front of a gear – will appear beside the quiz name to indicate that it has a release condition attached (**Only visible if conditions met**).



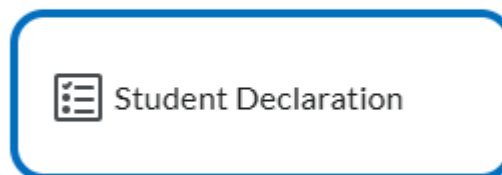
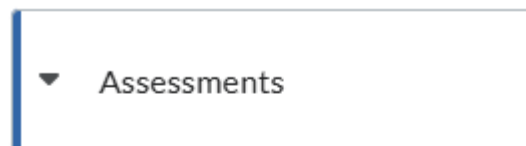
Student Perspective

When the student accesses this section, they will initially just see the Student Declaration.



 Student Declaration

And will only see the quiz once they have checked off the declaration item on the Checklist.



 CA Quiz 2